



<h1>FACT SHEET</h1>	<h2>State Superfund Program</h2>
---------------------	----------------------------------

Receive Site Fact Sheets by *Email*. See "For More Information" to Learn How.

AL TECH SPECIALTY STEEL

Have questions?
See
"Who to Contact"
Below

Site No. 401003 - Operable Units 01& 02
Location Lincoln Avenue and Spring Street Road
Town of Colonie/Albany County

Investigation to Continue at State Superfund Site

The New York State Department of Environmental Conservation (DEC) has taken over the site-wide investigation activities at the Al Tech Specialty Steel site ("site") located at Spring Street and along Lincoln Avenue in Colonie, Albany County. Please see the included map for the site location. Documents related to the investigation and cleanup of this site can be found at the document repositories identified below under "Where to Find Information."



Figure 1: Northern Portion of the AL Tech Specialty Steel Main Plant Area (OU-01)

The site is listed as a Class "2" site in the State Registry of Inactive Hazardous Waste Sites (list of State Superfund sites). A Class 2 site represents a significant threat to public health or the environment; action is required.

Investigation Work Plan

The purpose of the upcoming investigation is to gather additional environmental data across the entire facility and determine whether past investigations were adequate to characterize contamination on the AL Tech property. Site investigation activities will commence in June of 2014 and will be conducted as specified in the *Field Activities Plan, DEC May 2014*. The investigation will piggyback on previous investigations conducted by the owner of the facility and focused investigations performed in the past by DEC. If DEC determines that the full nature and extent of contamination has not been documented, additional focused investigations may be necessary.

Highlights of the Site Investigation

Due to the size of the facility, a phased approach is being utilized to define the full nature and extent of contamination. In the upcoming phase, the main plant area (MPA) will be divided into squares, each 200 feet by 200 feet (a grid). A sample of surface soil and multiple samples of subsurface soil will be collected from each grid to be analyzed for a wide range of potential contaminants. Samples will be collected from sediment in the Kromma Kill adjacent to the MPA and will also be analyzed

for potential contaminants. Other media, such as groundwater, surface water, and various building materials are also targeted for sample collection and analysis from locations likely to be impacted by contaminants based on a thorough review of historical site-related documents.

Site Background

LOCATION: The Al Tech Specialty Steel site lies in a Suburban area in the Town of Colonie, NY. The Al Tech Main Plant Area



Figure 2: AL Tech Specialty Steel Waste Management Area (OU-02) After Mowing

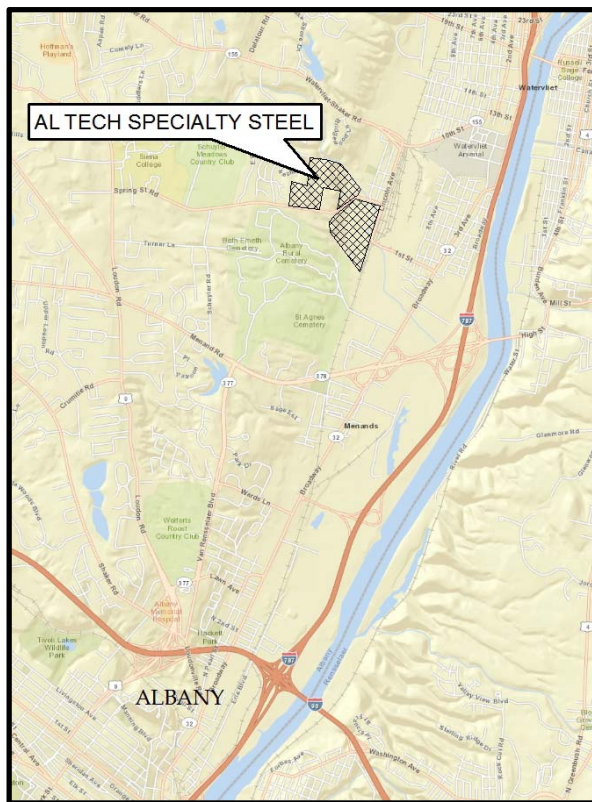


Figure 3: Site Location

(MPA) spans the area between Lincoln Avenue and Spring Street Road while the Al Tech Waste Management Area (WMA) is situated on a hillside along Spring Street Road. Other former industrial scale facilities are also located in the immediate vicinity including the former Delaware and Hudson Rail Yard and the former Adirondack Steel and Casting.

SITE FEATURES: The MPA encompasses 68 acres and consists of eight large remaining buildings, roadways, concrete foundation slabs and former industrial waste disposal areas. Pioneer plant species are beginning to reclaim some portions of the property. The Kromma Kill flows along significant lengths of the north and the east sides of the MPA. The Hudson River is approximately one mile downstream from the MPA.

The WMA is comprised of 31 acres of land and is occupied by a 12-acre industrial waste landfill. The remaining property contains wooded areas, former parking facilities and the leachate storage building. On the WMA, the Kromma Kill overlies the north and east boundaries with an unnamed tributary to the Kromma Kill flowing on the south side of the landfill. Two unpaved roads are maintained to provide access to the landfill.

WHERE TO FIND MORE INFORMATION

More information regarding past remedial activities at the site is available on the NYSDEC website. See the web address below to access these additional details.

DOCUMENT REPOSITORIES

Project documents are available at the following location(s) to help the public stay informed.

Watervliet Public Library
1501 Broadway
Watervliet NY 12189
(518) 274-4471

NYS DEC
625 Broadway
Albany NY 12233
(518) 402-9767

INFORMATION ON THE WEB

Project Description and a list of available documents is available on the New York State DEC Website at <http://www.dec.ny.gov/chemical/96987.html>

WHO TO ASK

Project Related Questions

Ian Beilby, P.E.
Department of Environmental Conservation
Division of Environmental Remediation
625 Broadway
Albany, NY 12233-7016
(518) 402-9767
iabeilby@gw.dec.state.ny.us

Site-Related Health Questions

Albert DeMarco
New York State Department of Health
Empire State Plaza – Corning Tower Room
1787
Albany NY 12237
(518) 402-7860
BEEI@health.state.ny.us

Receive Site Fact Sheets by Email

Have site information such as this fact sheet sent right to your email inbox. NYSDEC invites you to sign up with one or more contaminated sites county email listservs available at the following web page: <http://www.dec.ny.gov/chemical/61092.html>. It's quick, it's free, and it will help keep you *better informed*.



As a listserv member, you will periodically receive site-related information/announcements for all contaminated sites in the county(ies) you select.

Note: Please disregard if you already have signed up and received this fact sheet electronically.